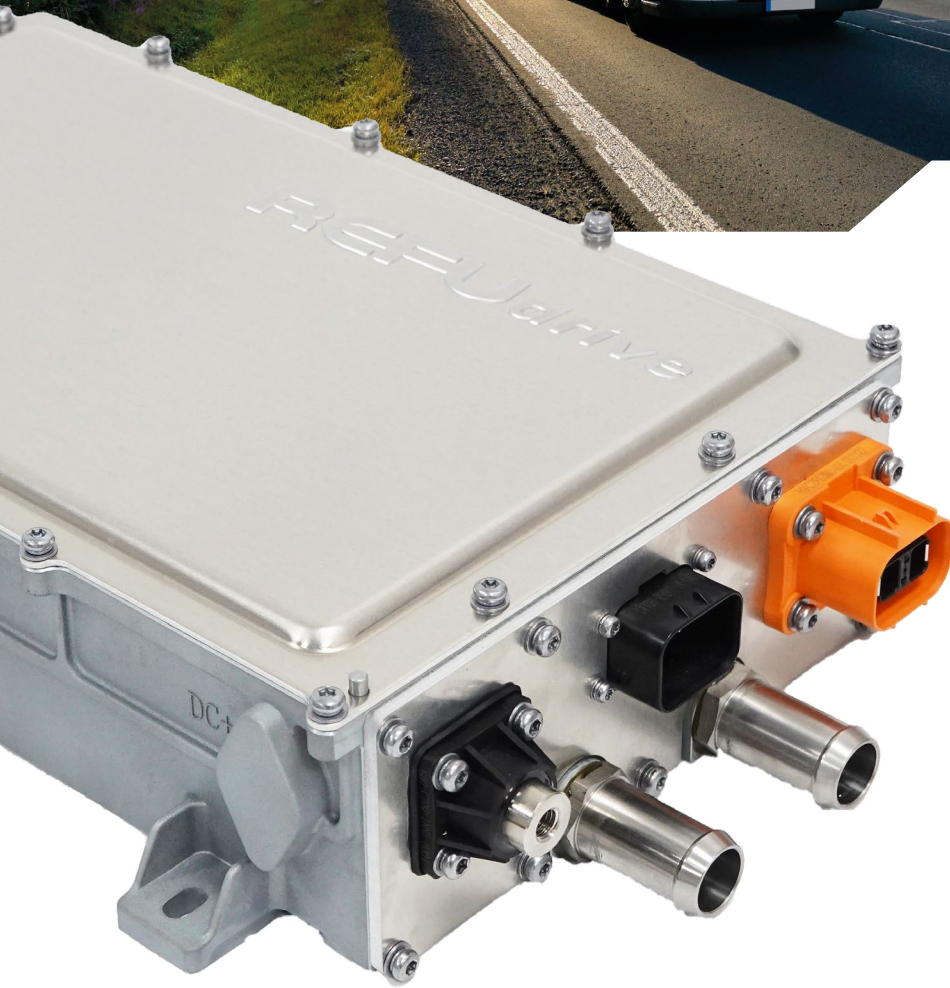


**AUTOMOTIVE
QUALIFIED**

DC/DC CONVERTER

- + Compact footprint
- + Lightest in its category
- + Efficiency > 95 %
- + High volumetric & gravimetric power density
- + AEC grade components



REFUdrive

RPCS DC4K-900 / DC6K-750

The converter for e-mobility application

www.refu-drive.com



POWER DATA

DC output power	4 kW	6 kW
DC input voltage range	400 – 900 VDC	400 – 750 VDC*
Output current	145 A	218 A
Output voltage	27.5 VDC	
Output voltage accuracy	+-1%	
Output voltage ripple	≤ 500 m Vpk-pk	
Auxiliary voltage	9 – 32 VDC	
Ambient temperature	-40 to 85 °C (no derating)	

MECHANICAL DATA

Dimensions w/o connectors [L x W x H]	326 x 211 x 83 mm	326 x 212 x 86 mm
Weight	< 5 kg	< 6 kg
Degree of protection	IP 67	
Type of cooling	Liquid	

GENERAL DATA

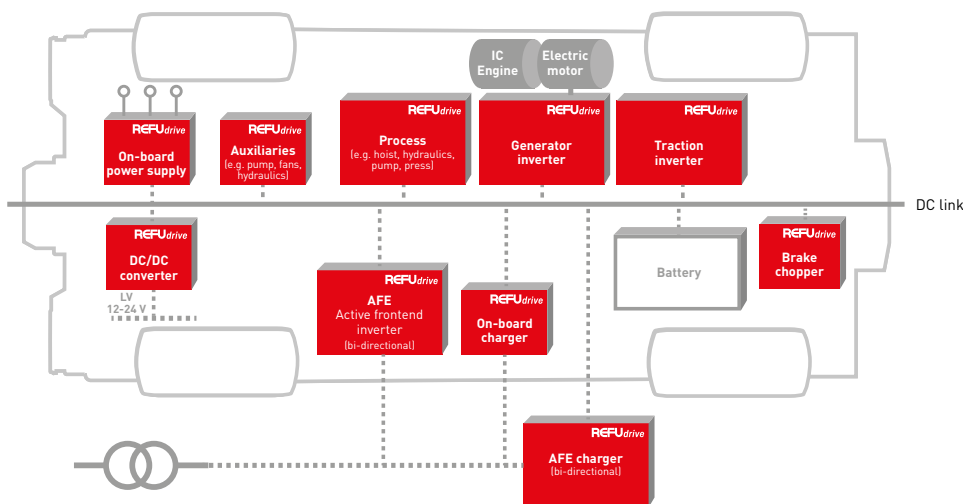
Communication interface	CAN-BUS	
Baud rate	500 kBit/s	
Cable connection	HV: plug Control: plug LV output: bolt connection	

PROTECTION SPECIFICATIONS

Protections	Input/output OVP/UVP, input reverse protection, output short circuit protection, over current protection, over temperature protection	
-------------	---	--

*900 VDC available in 2025

POWERFUL DRIVE SOLUTIONS FOR E-MOBILITY



+ APPLICATIONS

- Commercial vehicles
- Construction equipment
- Public transportation
- Municipal vehicles
- Agricultural machines