



**1,200 A PEAK
CURRENT
FOR
10 SECONDS**



TRACTION INVERTER

- + HPP - High Peak Power
- + Highest degree of protection and efficiency
- + Flexible and individual configurations
- + Highest performance at maximum ambient and coolant temperature
- + Suits to all types of motors

REFUdrive

RPCS 730-320K-HPP

The powerful inverter for all drive applications

www.refu-drive.com



POWER DATA

AC output power @ 570 V DC	320 kVA
Nominal DC voltage	750 V
DC input voltage range	300 – 850 V
max. AC output voltage @ 3 AC	500 V
Rated current @ 4 kHz @ duty type S1	460 A
Peak current for 10 s @ 4 kHz @ duty type S2	1,200 A
Peak current for 10 s @ 8 kHz @ duty type S2	920 A
Peak current for 120 s @ 4 kHz @ duty type S2	782 A
Output frequency	0 – 599 Hz (optional up to 800 Hz)
Control supply voltage	24 V DC (± 20 %) optional 12 V DC (± 20 %)
Ambient temperature	-25 to 85 °C (beyond 55 °C with derating)
Coolant temperature	-25 to 65 °C

CONTROL HARDWARE

Analog I/O	1x IN (± 10 V or ± 20 mA) and 1x OUT (± 5V, max. 5 mA)
Digital I/O	4x IN / 2x OUT / 4x IN/OUT
Service interface	RS485
Communication interface	CANopen / SAE J1939
Motor temperature control	PTC, PT1000, KTY
Encoder system	Resolver, HTL, TTL, sine/cosine encoder
Resolver input voltage	7 V _{rms}
Transformation ratio for resolver	0.286 or 0.5

MECHANICAL DATA

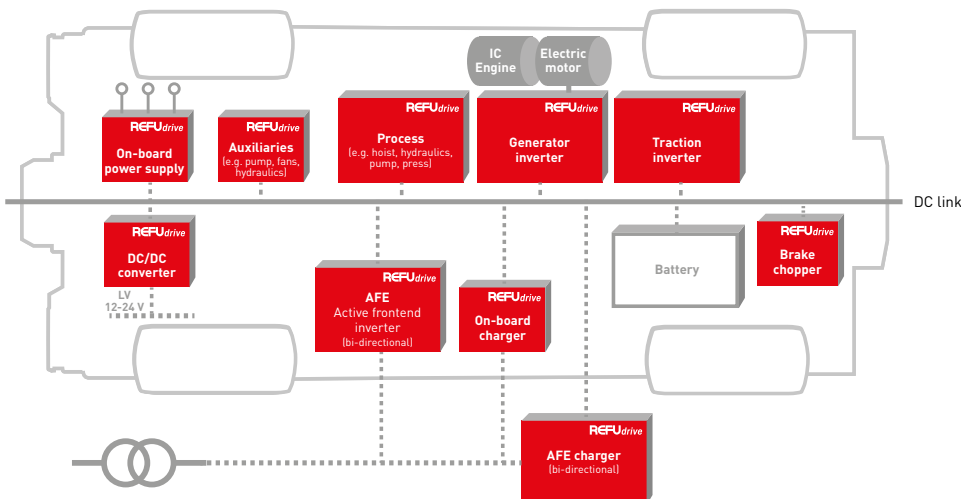
Dimensions w/o connectors [L × W × H]	506 × 552 × 150 mm
Weight	44 kg
Degree of protection	IP 67 (IP6K9K as option)
Type of cooling	Liquid: water-glycol

GENERAL DATA

User Interface	REFUdriver software tool
Electromagnetic compatibility	UN ECE R10, EN 61800-3
Protective functions	Short circuit, earth fault, over current, voltage and temperature monitoring, motor temperature monitoring
Configurations	Motor inverter, generator inverter, DC-DC converter, charging devices, on-board power supply
Cable connection	HV: gland or plug / LV control: plug

Safety functions and E1 marking are available as an option

POWERFUL DRIVE SOLUTIONS FOR E-MOBILITY



+ APPLICATIONS

- Construction equipment
- Commercial vehicles
- Public transportation
- Municipal vehicles
- Agricultural machines
- Port equipment

